

Nelca Roco

Lighting Design

PORTFOLIO



Nelca Roco is an Official Dialux Trainer certified by Dial Germany.

She worked as a lighting designer for ten years in one of the well-known lighting brands in Dubai.

She is an architect by profession. She is also a LEED AP certified professional.

She is passionate about sustainable architecture and lighting. She loves yoga, coffee, reading, investing and learning new things.

[Facebook](#), [Linkedin](#), [Twitter](#), [Youtube](#), [Slideshare](#), [Blogger](#), www.udemy.com, www.skillshare.com, www.fiverr.com, www.nrocolighting.com



Netherlands



Norway



Austria,
Croatia, Serbia



Philippines



Poland



Romania + Moldova



Russia



Sweden



PROJECTS

Landscape Lighting Projects

The Pointe
SCI Auffman Residence
Bar-Ilan University
Ras Al Knor Residential Zone 1,2,3
Tiara United Towers
Aishti Old Building
Manateq Oasis
Holiday Inn Hotel
Intercon Majlis
Iran Mall
Marina Housing Development
Esplanade Landscape
Sarab Commercial Complex
Mercantile Suite
Old Olive Tree
Egypt Club Dubai
Triangle Villa
Mercure Grand Hotel
MC3 Airport
Nakheel – The Pointe
Jal Hotel
Alba University
Sinbad Village Egypt
Ambedkar Library
Manuma Villa
Algabas Refinery
Expo 2020 Stairs
Kattameya Palm Hills
Dakar Mosque

Façade Lighting Projects

Al Hail Mosque
Dubai Creek Golf Club
Ferrari Maserati Façade
Springs Mall
DEWA Mosque Façade
The Royal Atlantis Residence
Sarab Community
Lulu Bateena
Al Rai – Centrepoint
RTA Bus Stations
QP Tower
Jumeirah Gate Facade
Al Hamili
Al Asha
ADNA Bell Tower
Esplanade
NedBank Park Square
Al Thani Residence
Eco Bank Brazaville
Al Meera
Dubai Frame
NSDS Zaha Hadid
Alba University
Khartoum NCP Façade
Olaya Towers
Marshal Tower
Dorra Complex
TV Outdoor
Al Barsha Mall

103 Commercial Complex
Ruwais Mall
Al Rawaq
NBD Bank
Chelsea Hotel
Mall of Oman
ISF Qatar
Palais Royal Rabat
Chalet Façade
Mostafa Villa
Palace Gateway
Musab Al Nisf
Manateq Façade
Adjan Tower
Infinity Bridge
Cheruvu Bridge
Al Hamili
Cleopatra Bldg
DCC – Durban Christian Centre
Fahad Al Ahmad Bakery
Ambedkar Foundation
Qasr el Nile Bridge
Maqta Bridge

Retail Shop Lighting Projects

AiZone
The Kooples at ABC Verdum
TRBJ at ABC Verdum
Batimat Showroom
Dubai Mall Rotunda

Gulf Mall – Rivalta
Marie France Vandam
Shorite – Uyo
Aishti Old Building

Supermarket/ Hypermarket

Al Meera Hypermarket
Grab & Go Dubai Metro
Lulu Hypermarket @ Sanman
Monoprix Galleria Mall
SPAR – Airport Road
Spinneys - Muscat Hill
Spinneys – Dubai Marina
Spinneys – Al Ghurair
Spinneys - Marina Walk

Restaurant Lighting Design

Centro Food Hall
Panini Restaurant
Mercure Grand Hotel Restaurant
Ibis Hotel Restaurant
DEWA Kitchen

Education Lighting Projects

Al Ghurair University
Art Center – NYU – Abu Dhabi
Horizons English School
Alba University
College of Dentistry - KSA

PROJECTS

Office Lighting Projects

Al Salam TECOM Tower
DPA – PCFC HQ
Etisalat Meeting Room
COWI Data Center
DEWA HQ Office
Hugo Boss Office
Kristina Zanics Office
Ministry of Energy Bldg
ODG Office
Oman Board Room
Sky Office – KSA
Zumtobel Dubai Office
Thorn Dubai Office
1-Office Building
DPA Office

Hotel Lighting Projects

Aishti – Unit 75C NY Residence
Aishti – Unit 80D NY Residence
AVANI Hotel
Adamoua Hotel
Al Asha Hotel
Evian Apartment
Hotel Arcade Bar Counter
Mercure Hotel - Bedrooms
Premier INN IBN Battuta Mall
WME La Reserve Residential
The Palace Downtown Guestroom

Residential Lighting Projects

Villa Papillion
4 to 6 Bedroom Villa
Airport Lighting Projects
ACC – Bahrain
Al Tayer Comml and Res
Ghaf Villas
MAF Villa
Royal Family Gym Bldg
Shroff Villa
DEWA Accomodation
Mulk-Awas Residential Villa
Dr. Hussain Villa
M Massoud Villa
Habbour Villa

Healthcare Lighting Projects

AHREND Showroom
Jordan Hospital
Neuro Spinal Hospital and
Radiosurgery

Car Showroom Lighting Projects

Infinity Showroom
Ford Showroom - Rawdath
Porsche & BW Showroom
Toyota Showroom Qatar
VW Showroom Khobar

Museum Lighting Projects

SAG Museum
Aishti - Zaha Hadid Collection

Industrial Lighting Projects

QAFAC Industrial Petrochemical
Laboratory
Shell PGTL
Carrefour Warehouse

Transportation Lighting Projects

Kenya JI Airport – ADPI
MSC Cruise Liner Terminal
Riyadh Metro Station
Chengdu Airport
MC3 Airport
Emirates Terminal 3

Sports Lighting Projects

Doha Education City Golf Course
Oman Football and Cricket Stadium
Tabuk North Golf Course – KSA
Arab American University Football
Hoa Binh Golf Course - Vietnam

Carpark Lighting Projects

Al Riyadh Carpark
Al Qurum Shatti Hotel Carpark
Jumeirah Gate Carpark
Porsche & BW Carpark

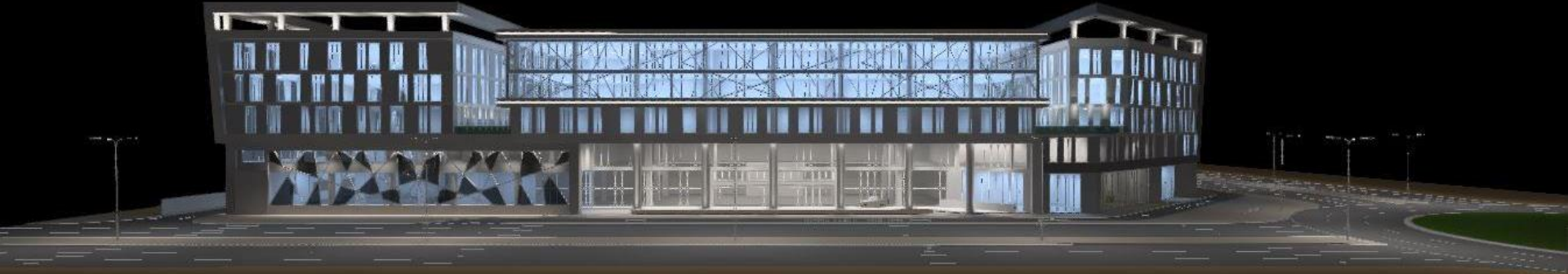
ROP Parking

ADIA Carpark
Business Bay Office Tower
Audi – Musaffah Carpark
Podium Carpark
Riyadh Promenade
DEWA Carparking
PCFC HQ Carpark

Road Lighting Projects

ROP Road – Oman
Al Barari Infra – Street lighting
Meadows Road
Cheruvu road
Al Ain LED Street Lighting
Various UAE Road Lighting Projects

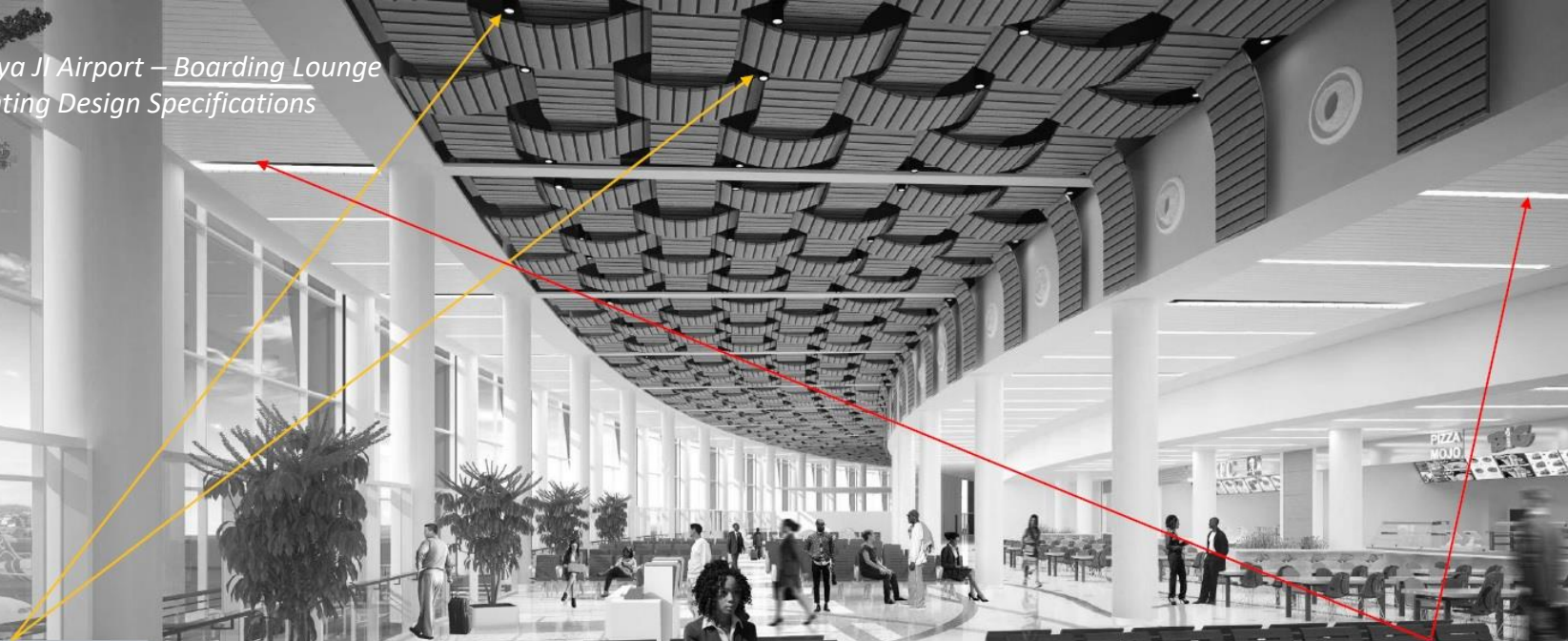
DEWA HQ – Indoor and Outdoor Lighting Design



PORTFOLIO

Nelca Roco Lighting Design

Kenya JI Airport – Boarding Lounge
Lighting Design Specifications

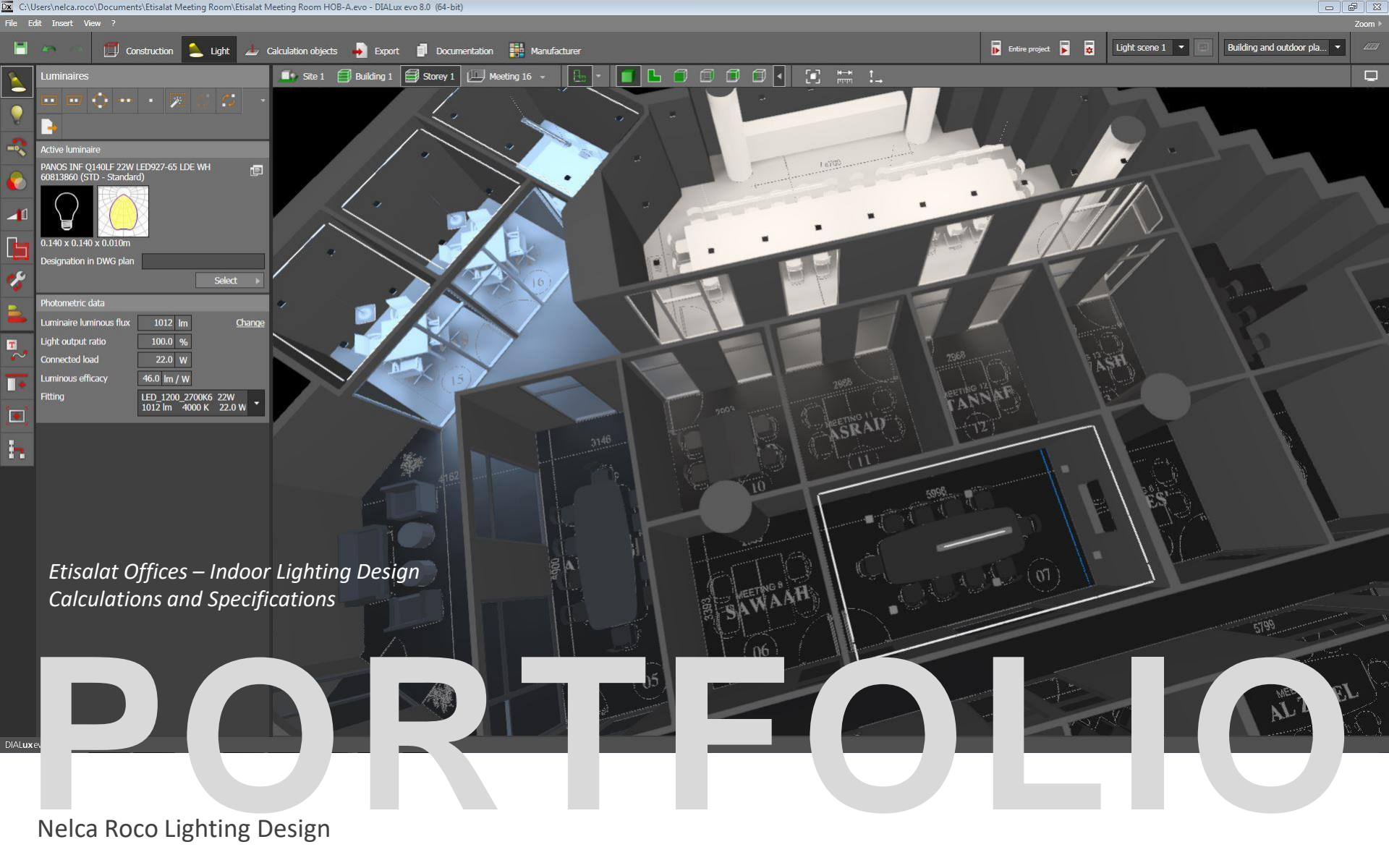


PORTFOLIO

Nelca Roco Lighting Design

High Output
Download
Click to download

Technical re
2.015m len
5.60m. Clic
ed high
2 to g
e total lengt
Click to d
load datashe



Luminaires

Active luminaire
PANOS INF Q140LF 22W LED927-65 LDE WH
60813860 (STD - Standard)

0.140 x 0.140 x 0.010m
Designation in DWG plan

Photometric data

Luminaire luminare flux	1012 lm	<input type="button" value="Change"/>
Light output ratio	100.0 %	
Connected load	22.0 W	
Luminous efficacy	46.0 lm / W	
Fitting	LED_1200_2700K6 22W 1012 lm 4000 K 22.0 W	

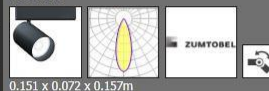
*Etisalat Offices – Indoor Lighting Design
Calculations and Specifications*

PORTFOLIO

Nelca Roco Lighting Design

Luminaires

Active luminaire
SUP2 L LED1250-930 FL LDO 3CY BK [STD]
60714980



0.151 x 0.072 x 0.157m
Designation in DWG plan [Select]

Properties

Name: Luminaire 304

Positioning

Position: 7.570 3.387 2.750 m
Rotation: 0.0 0.0 -180.0 °

Mounting type

Mounting type: Surface-mounted [Apply again]

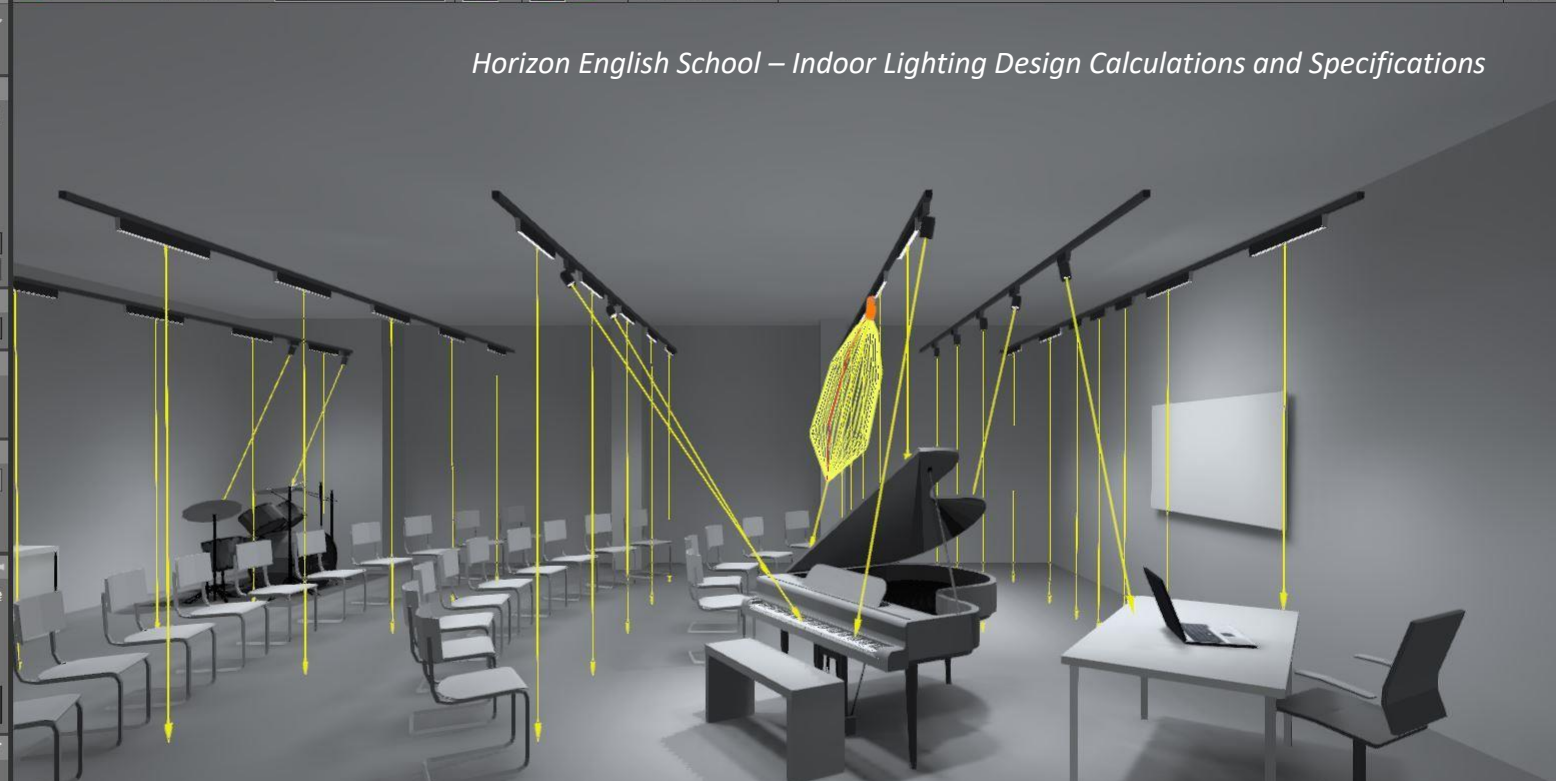
Light centre height: 1.793 m
Mounting height: 2.750 m

Photometric data

Luminaire luminous flux	1269 lm	Change
Light output ratio	100.0 %	
Connected load	24.0 W	
Luminous efficacy	52.9 lm / W	
Fitting	LED_SU2-L_1269_930 2... 1269 lm 3000 K 24.0 W	

Energy consumption and costs

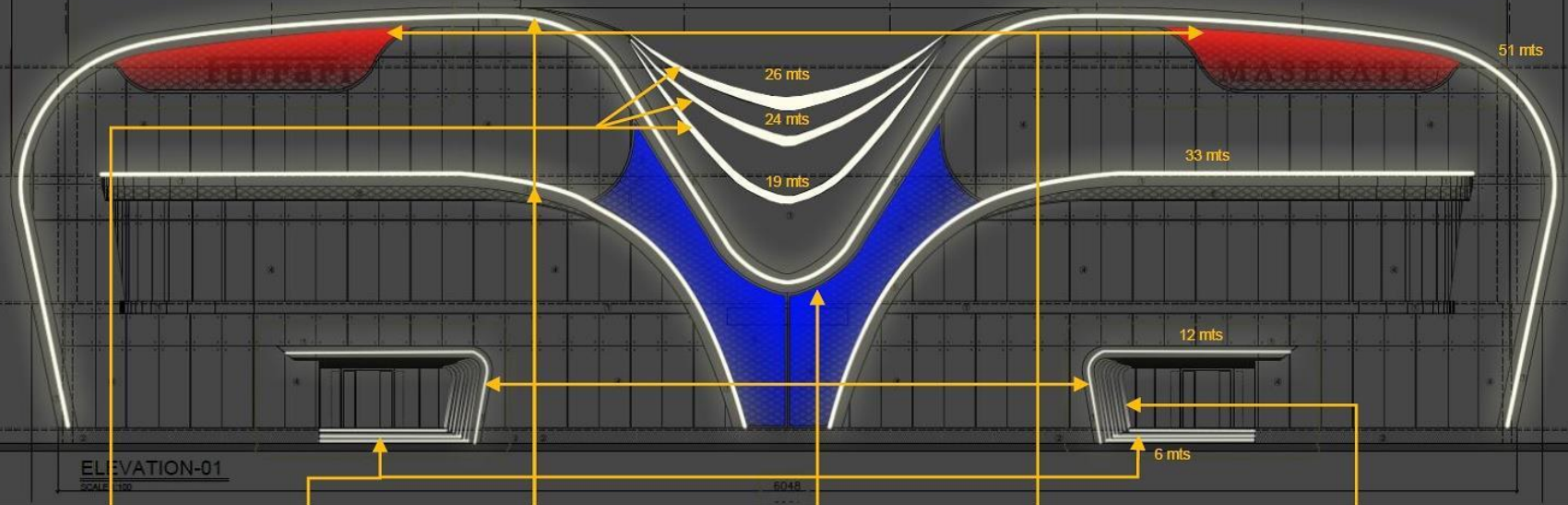
Constant light regulation possible



PORTFOLIO

Lighting Design Concept

Ferrari Maserati Façade – Lighting Design Concept and Specifications



LEDFlex Ultimo
Neon 4000K
White
Light



LEDFlex Mini
Neon 5000K
White
Light



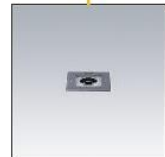
LEDFlex Neon
Domed 5000K
White
Light



Accc Fino Blue
(Clip Bracket)



Accc Fino Red
(Clip Bracket)




Thorn E-fact C00
7 deg Beam
4000K White

PORTFOLIO

*DAMAC Chairman's Office – Indoor Lighting Design
Calculations and Specifications*

PORTFOLIO

Nelca Roco Lighting Design



*TRBJ Shop – Indoor Lighting Design Calculations
and Specifications*

PORTFOLIO

Nelca Roco Lighting Design

Calculation objects

- Draw rectangular calculation object
- Draw polygonal calculation object
- Place calculation object
- Isolines
- False colors
- Value chart
- Delete diagrams
- Results on surface
 - Draw rectangular cutout
 - Draw polygonal cutout

Active calculation object

Calculation surface

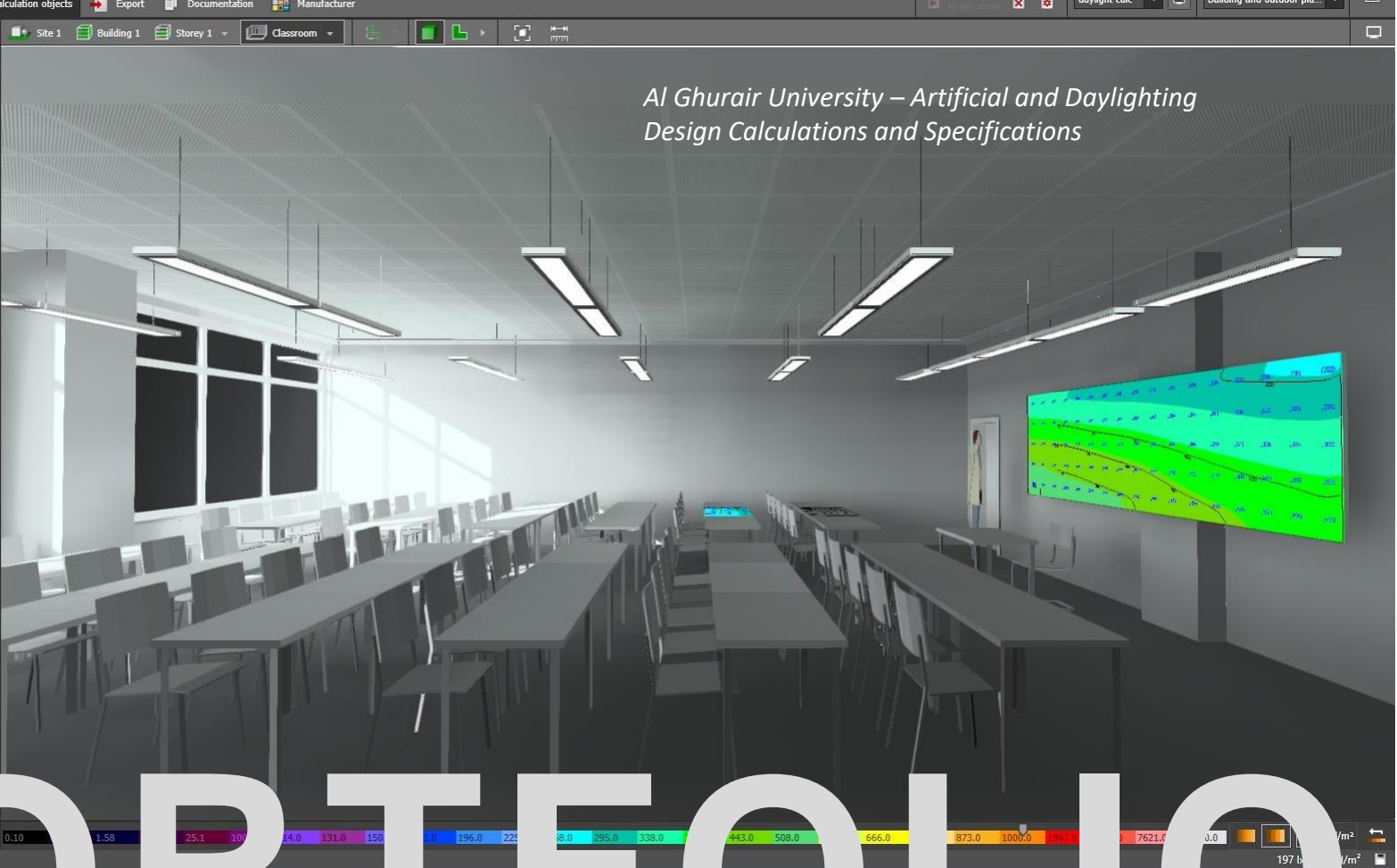
Select

Calculation parameters

Perpendicular illuminance

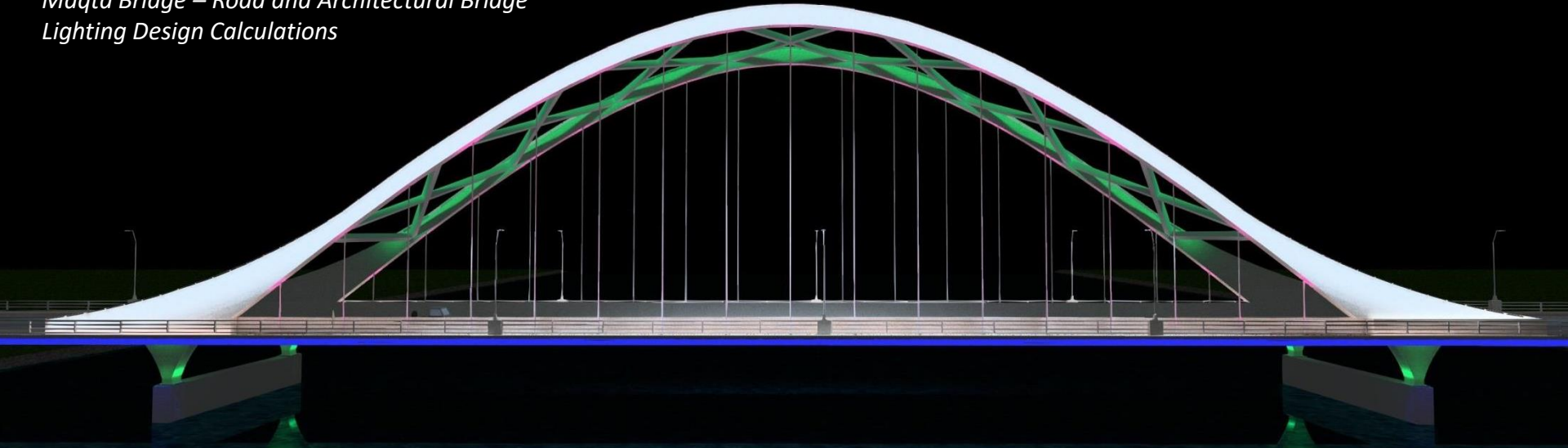
Height of set 0.000 m

Settings for measuring grid



PORTFOLIO

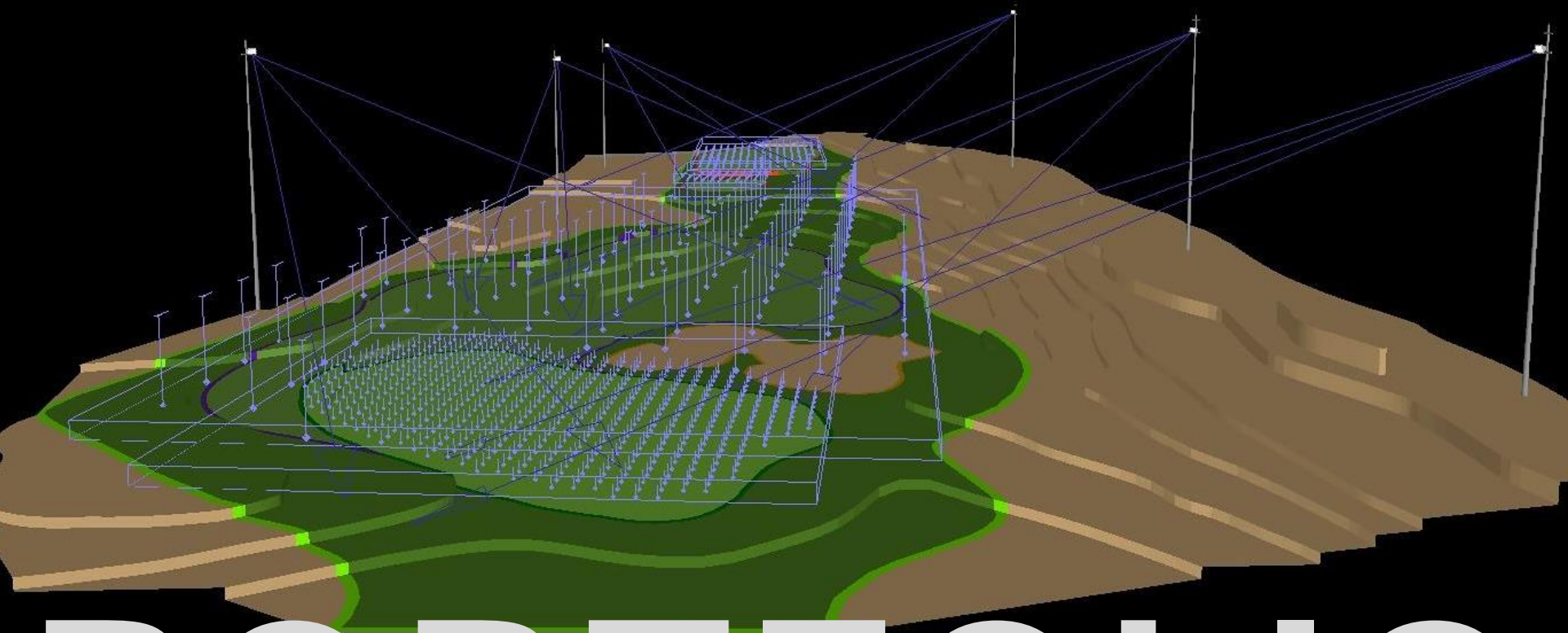
*Maqta Bridge – Road and Architectural Bridge
Lighting Design Calculations*



PORTFOLIO

Nelca Roco Lighting Design

*Education City Doha Golf Course – Sports Lighting
Design Calculations and Specifications*



PORTFOLIO

Nelca Roco Lighting Design



Nelca Roco

- Architect.
- PRC License No. 0018059
- (Mobile no.) +63 949 8225000
- (Watsapp) +971 56 2247523
- e-mail: nelca_roco@yahoo.com
- #196 St. Anthony 2, Brgy. Inarawan, Antipolo City, 1870 Philippines
- Age : 39 years old
- Sex : Female
- Civil Status : Married
- Nationality : Filipino (Philippines)
- Height : 5 ft. 2 inches

- Language : English and Tagalog
- Computer and Free-Hand Skills: AutoCad, Sketchup, Dialux, Dialux evo, Relux and AGI32, Adobe Photoshop 0.7 and CS2, Microsoft Word, Excel, Powerpoint, PCON Planner, GIF
- Satisfactory in Free-hand drafting, rendering and design sketching

SECURITY CLEARANCES:

- Emirates ID No. 784-19808626985-3
- Dubai Driver's License No. 1587221
- Passport No. P0692703A
- SSS No. 33-5602052-4
- TIN No. 243-355-779
- NBI ID No. F822N1STECA000
- TIP Student No. 97-47955
- MAPUA Student No. 2004-190013

WORK EXPERIENCE:

- Jan. 2009 – Jan. 2019
Company : Thorn Lighting Ltd. (ZumtobelGroup)
Address : 4B Street, Al Quoz Industrial Area Dubai, UAE 22672
Position Held : Lighting Designer
- Feb. 2007 – Oct. 28, 2008
Company : Recio+Casas Architects

Address : 6th Flr. Paseo Center 8757 Paseo de Roxas Ave. Salcedo Village, Makati City, Phils.

Position Held : Junior Architect / Office Admin

- Nov. 2004 – Nov. 2006

Company : Technological Institute of the Philippines

Address : 938 Aurora Boulevard, Cubao, Quezon City, Philippines

Position Held : Architecture Faculty Member

EDUCATION:

College: Technological Institute of the Philippines

Degree/Course: B. S. Architecture

Post Grad. Studies : MAPUA Institute of Technology

Master's Degree : M. S. Architecture Education (under thesis)

PROFESSIONAL ORGANIZATION:

Architect : United Architects of the Philippines

LEED Professional : USGBC LEED AP Homes

Certified Dialux Trainer : Dial Germany

Lighting Designer : Phil Lighting Designers Assoc.

[Facebook](#), [Linkedin](#), [Twitter](#), [Youtube](#), [Slideshare](#), [Blogger](#), [www.udemy.com](#), [www.skillshare.com](#), [www.fiverr.com](#), [www.nrocolighting.com](#)

Your passion to light.